

HIGHLINES

NEWS FOR THE MEMBERS OF PELLA COOPERATIVE ELECTRIC

AUGUST 2025

Welcome Seth Fisher to the Cooperative Crew!

There's a new face out in the field! Please join us in welcoming Seth Fisher to the Pella Cooperative Electric lineman crew.

Seth recently started as an apprentice lineman and has already hit the ground running. With a strong work ethic and a great attitude, he's quickly proving to be a valuable addition to our team.

A Pella native through and through, Seth graduated from Pella High School in 2022. He went on to complete the Powerline Program at DMACC, where he gained hands-on training and a solid foundation in the skills needed to keep the lights on and our system running safely.

Back in January, Seth spent time job shadowing our linemen and it didn't take long for us to see he'd be a great fit. Now, just a few months later, we're proud to have him officially join the co-op family.

Welcome, Seth!



Seth Fisher

The PCEA Board of Directors met on July 31 and the following was discussed:

Board Briefs

- Craig Woycheese of Toth & Associates presented an update on the Cooperative's cost-of-service study. The study is intended to ensure all member rate classes are paying their fair share based on the true cost to serve them. The Board will continue reviewing the findings in the months ahead.
- The Board approved a new loan package through NRUCFC to finance the construction work plan. This funding allows the Cooperative to reinvest in our electric system and improve long-term service reliability for all members.

Pella Cooperative Electric

Your Touchstone Energy® Cooperative 

2615 Washington St.
PO Box 106
Pella, IA 50219

1-800-619-1040
www.pella-cea.org
service@pella-cea.org



Open weekdays: 7:30 am - 4:30 pm;
excluding holidays



Board of Directors

President
Duane Ver Ploeg

Asst. Secretary/Treasurer
Darrell Boot

Vice President
Steve Inskeep

Director
Jon Van Woerkom

Secretary
Bryce Arkema

Director
Roy Jahner

Treasurer
Carroll Hoksbergen

CEO
Doug Stewart

Pella Cooperative Electric is a not-for-profit, member-owned electric cooperative, governed by an elected Board of Directors. This institution is an equal opportunity provider and employer. See pella-cea.org > Non-discrimination Statement for more information.

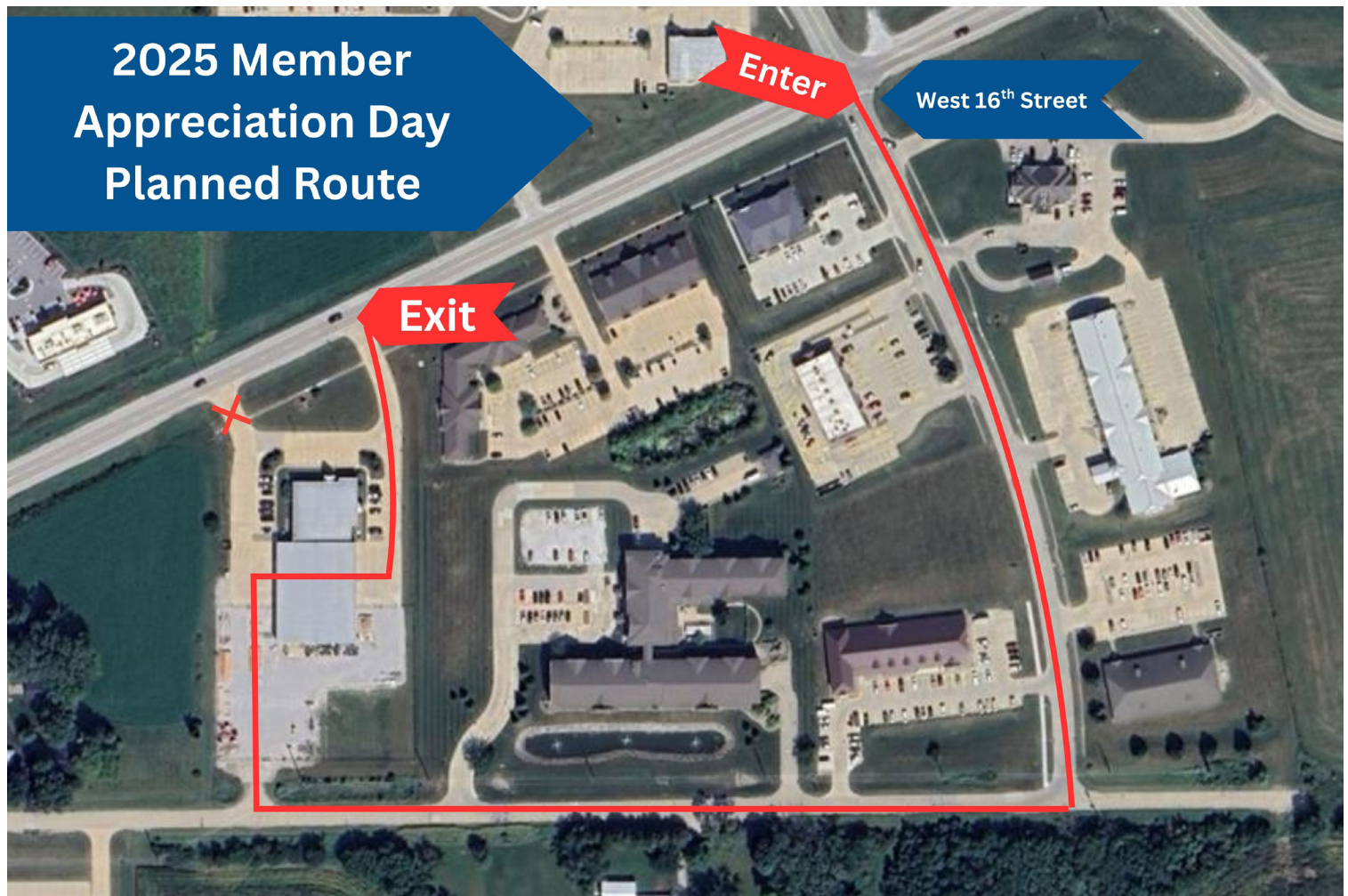
New Route Alert for Member Appreciation Day!

Our annual Drive-Through Member Appreciation Day BBQ is right around the corner and we can't wait to see you!

Just one important update this year: **THE DRIVE THROUGH ROUTE HAS CHANGED!**

To help traffic flow smoothly and safely through our lot, we've made a few big adjustments to how you'll enter, drive through, and exit the event.

Please enter on West 16th Street by the Casey's and drive down Fifield Road to the back gate of our pole yard. There, staff and directors will be onsite to direct you into the shop! For more details, please refer to the map below.



As always, you'll drive through our shop where our team will be serving up fresh-grilled burgers and hot dogs, along with chips, drinks and a sweet treat as well as a free giveaway! We love this annual tradition, and we're so thankful for your continued membership!

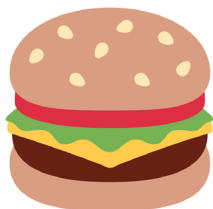
We'll have signage and staff onsite to help direct traffic, but reviewing the new route ahead of time will help things run even more smoothly.

We look forward to celebrating you!

MEMBER APPRECIATION DAY DRIVE-THRU BBQ

SATURDAY, SEPTEMBER 13

11AM - 1PM



WHERE

Pella Cooperative Electric
2615 Washington Street, Pella



DRIVE-THRU

Drive thru the co-op's parking lot for a hamburger or hotdog on us, grilled by the Marion County Cattlemen. We'll hand you a member gift on your way through!

**Until supplies lasts! Meals are provided for vehicle occupants only.*



GIVEAWAYS

During the week leading up to Member Appreciation Day, we will randomly pick door prize winners to win \$25 off your electric bill! No entry needed. We'll let you know if you win! Watch our Facebook page for prize winner announcements.

Three Smart Home Technologies to Help You Save Energy

Smart technologies make our homes more comfortable, convenient and energy efficient. By connecting your home Wi-Fi network, smart devices automate everyday tasks like lighting, heating, cooling and home security--they can even communicate with other smart devices in the home.

While not all smart home products are specifically designed with energy savings in mind, there are several smart technologies that can help you lower home energy use. Here are the top three smart home devices to help you save.

Smart Thermostats

Smart or not, your thermostat is the most effective tool for controlling energy use, as heating and cooling typically account for the largest portion of energy bills. Smart thermostats allow you to adjust the indoor temperature through an app, giving you full control from anywhere on the go. Many smart thermostats include learning capabilities and will adjust the thermostat based on previous behavior and patterns.

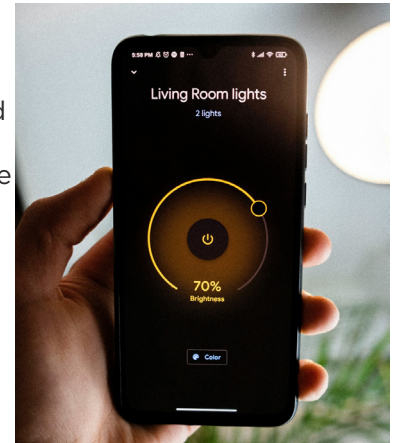
According to the Department of Energy, smart thermostats can reduce heating and cooling bills by more than 8% annually, and with models as low as \$65, they typically pay for themselves in one year.



Smart Lighting

Smart LED bulbs use less electricity than traditional bulbs and can be scheduled or turned off (or on) remotely through a smart phone app. Smart bulbs are available in a range of shapes, brightness levels, colors and more, so shop for the products that work best for your home lighting needs.

Many smart bulbs include motion sensors that turn on or off based on room activity, further optimizing home energy use. If you're new to smart lighting, try a home starter kit. Prices for kits range from \$70 to \$300+ depending on how many bulbs you need.



Smart Plugs

Smart plugs are inexpensive gadgets that can help you save energy. Many electronic devices consume power even when they are turned off (known as "phantom load"), which can take a toll on your energy bills. Smart plugs are simply plugged into an electrical outlet and connected to your Wi-Fi network. When set up, the smart plug can cut power (or return power) to non-smart devices, like coffee makers, phone chargers and other items that draw phantom load.

Many smart plugs can be paired with popular smart hubs, like Alexa or Google Nest, or controlled through the plug's associated app. Smart plugs are simple to use and a set of four can be purchased for as little as \$25. If you're looking for new ways to save energy, try these budget-friendly, convenient smart home technologies.



Happy Labor Day!

Our office will be closed Monday, September 1st.

