

HIGHLINES

NEWS FOR THE MEMBERS OF PELLA COOPERATIVE ELECTRIC

Thank You, Members!

Nearly 1,000 PCEA members turned out for this year's Member Appreciation Day Drive-Thru BBQ Sept. 16.

For more than two hours, a steady stream of cars pulled through the co-op's garage area to receive a member gift and a sack lunch of either hamburgers or hot dogs. Thank you to everyone who came out on a beautiful Saturday - we appreciate you!

Members of the Marion County Cattlemen handled the grill to serve up the tasty burgers and dogs while PCEA staff and board members put together the lunch bags and handed them out.

In the week leading up to the event, the co-op randomly drew five lucky winners to receive a \$25 bill credit. Congratulations to these PCEA members:

- Marilyn & Bruce De Bruin
- Kevin Silvers
- Robert Christiansen
- Robert Miller
- Dwight Van Weelden



Pella Cooperative Electric

Your Touchstone Energy® Cooperative 

2615 Washington St.
PO Box 106
Pella, IA 50219

1-800-619-1040
www.pella-cea.org
service@pella-cea.org



Open weekdays: 7:30 am - 4:30 pm;
excluding holidays



Board of Directors

President
Duane Ver Ploeg

Asst. Secretary/Treasurer
Darrell Boot

Vice President
Steve Inskeep

Director
Carroll Hoksbergen

Secretary
Bryce Arkema

Director
Jon Van Woerkom

Treasurer
Bob Van Soelen

CEO
Doug Stewart

Pella Cooperative Electric is a not-for-profit, member-owned electric cooperative, governed by an elected Board of Directors. This institution is an equal opportunity provider and employer. See pella-cea.org > Non-discrimination Statement for more information.

Iowa's Co-ops Celebrate National Co-op Month

It's October which means it's time to celebrate National Co-op Month! Again this year, Iowa's electric cooperatives are partnering with the Iowa Credit Union League and the Iowa Institute for Cooperatives to spread the word about the positive impact cooperatives have on Iowa. As part of the celebration, Iowa Governor Kim Reynolds signed a proclamation to declare October as Co-op Month in Iowa.

We're proud of our cooperative heritage of being locally owned and governed with a mission to improve quality of life for our member-owners. At Pella Cooperative Electric, we are democratically controlled by our members through an elected board of directors who make long-term decisions for the cooperative. All co-ops are guided by 7 Cooperative Principles, which is a key reason why electric cooperatives operate differently from other electric utilities; we always put the needs of our members first.

Follow us on Facebook, Instagram, and Twitter this month as we celebrate the cooperative difference. Learn more about the cooperative advantage at www.IowaCooperatives.com.

THESE ARE THE WORDS WE LIVE BY.

1



Voluntary & Open Membership

2



Democratic Member Control

3



Members' Economic Participation

4



Autonomy & Independence

5



Education, Training & Information

6



Cooperation Among Cooperatives

7



Concern for Community

National Fire Prevention Week Oct. 8-14

In a fire, mere seconds can mean the difference between a safe escape and a tragedy. Fire safety education isn't just for school children.

Teenagers, adults, and the elderly are also at risk in fires, making it important for every member of the community to take some time every October during Fire Prevention Week to make sure they understand how to stay safe in case of a fire.

This year's Fire Prevention Week campaign, "Cooking safety starts with YOU: Pay Attention to Fire Prevention" works to education everyone about simple but important actions they can take to keep themselves and those around them safe when cooking.

- Always keep a close eye on what you're cooking. For foods with longer cook times, set a timer to help monitor them carefully.
- Clear the cooking area of combustible items and keep anything that can burn, such as dish towels, oven mitts, food packaging, and paper towels.
- Turn pot handles toward the back of the stove. Keep a lid nearby when cooking. If a small grease fire starts, slide the lid over the pan and turn off the burner.
- Create a "kid and pet free zone" of at least three feet around the cooking area and anywhere else hot food or drink is prepared or carried.


Fire Safety

MAZE

Can you help Sparky find his outside meeting place?

Find his path by following the alphabet!

CHECK OUT SPARKY.ORG FOR MORE FUN!



START HERE!

A

B

C

D

E

F

G

H

I

J

K

L

M

N

O

P

Q

R

S

T

U

V


W

X

Y

Z

Outside Meeting Place



Meter Testing Scheduled in October

Chad Lankford with Raccoon Valley Electric Cooperative in Glidden will be out testing meters in our service territory this month!

As part of our Cooperative principle of cooperation among cooperatives, we appreciate the support from our fellow Iowa REC.

Chad will be testing meters through the PCEA territory the week of Oct. 9. Don't be alarmed if you see him by your meters and be sure to give him a friendly wave!

PCEA regularly tests and inspects our meters to ensure a high standard of accuracy. It is a rare occasion to find that meter is running fast. More commonly, as meters get older, they slow down. In these cases, a meter will allow more electricity to pass through it than it records. If a meter is found to be registering over or under 2% of the normal conditions of the member's electric load, the member's electric bill will be adjusted up or down to reflect the correction.

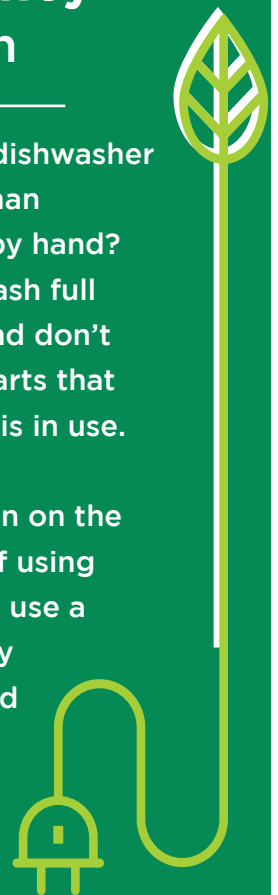


Energy Efficiency Tip of the Month

Did you know using your dishwasher is more energy efficient than washing a load of dishes by hand? To maximize efficiency, wash full loads in the dishwasher and don't block the arms or other parts that move while the appliance is in use.

For additional savings, turn on the "air dry" setting instead of using the "heat dry" setting and use a rinse aid to help dishes dry faster without spotting and streaking.

Source: Dept. of Energy



HALLOWEEN SAFETY TIPS

AT HOME:

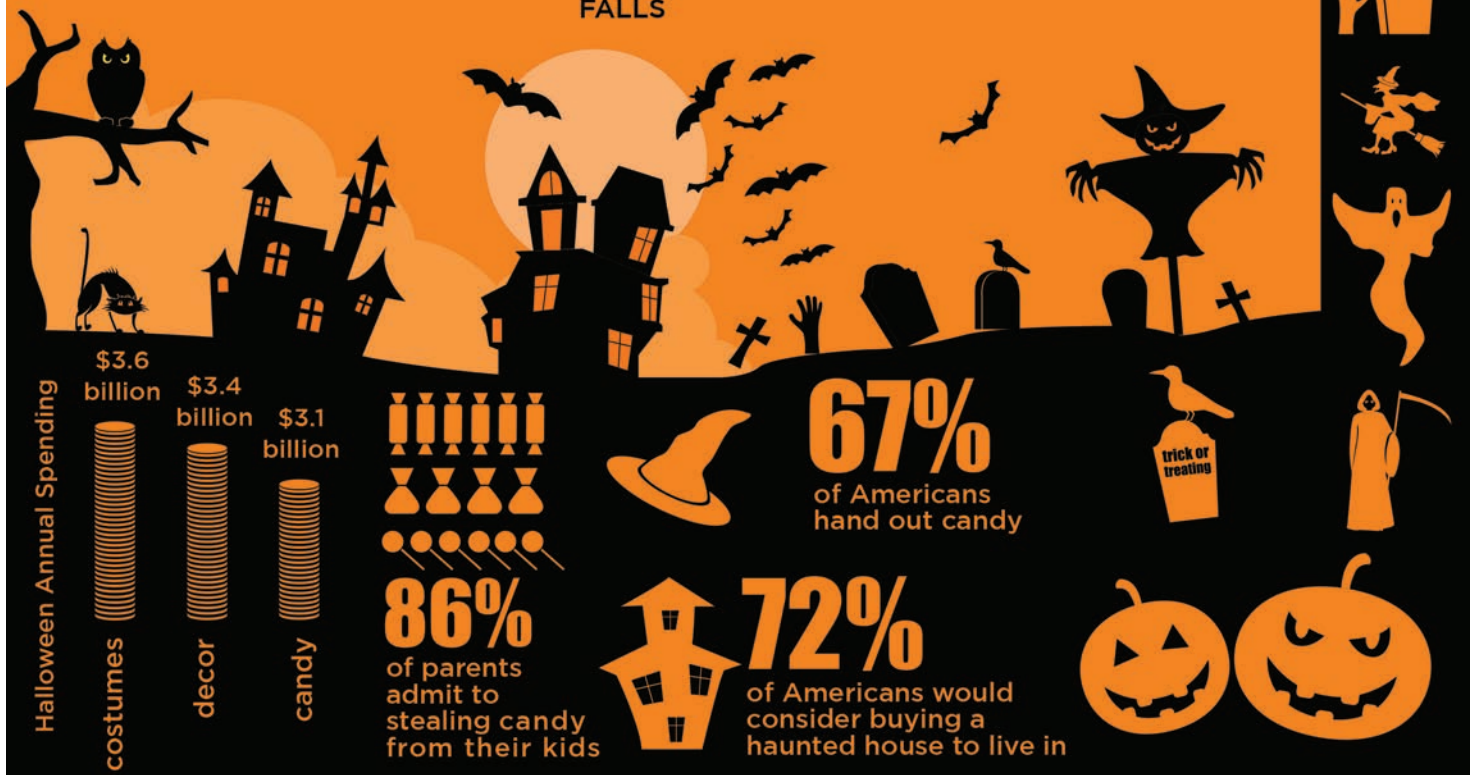
- 1 SECURE RAILINGS TO YOUR DOOR
- 2 CLEAR WALKWAYS OF DECORATIONS OR OTHER HAZARDS
- 3 USE BATTERY POWERED CANDLES

GETTING READY:

- 4 MAKE SURE COSTUMES ARE LABELED "FLAME RESISTANT"
- 5 USE NON-TOXIC MAKEUP RATHER THAN MASKS
- 6 CHECK THAT SHOES FIT PROPERLY TO PREVENT TRIPS OR FALLS

WHILE TRICK-OR-TREATING:

- 7 USE REFLECTIVE TAPE OR GLOW STICKS FOR ADDED VISIBILITY
- 8 ONLY GO TO WELL-LIT HOMES IN GROUPS
- 9 DON'T ENTER ANY HOMES OR CARS FOR TREATS



Board Welcomes NRUCFC Representative

The Board of Directors welcomed Darrin Lynch, Regional Vice President with National Rural Utilities Cooperative Finance Corporation (NRUCFC), to its Sept. 28 meeting.

Lynch presented the 2022 Key Ratio Trend Analysis (KRTA) report. The KRTA tracks 145 different financial and operational ratios for more than 800 electric cooperatives across the U.S. to help managers and directors evaluate and compare the cooperative's performance to others. PCEA continues to be in a strong financial position with service reliability numbers that are consistently well above industry averages.

NRUCFC is a member-owned, nonprofit cooperative that provides financial products designed to help rural electric cooperatives like PCEA achieve our goals. NRUCFC is not only our primary lender, but they also offer treasury services, regulatory advice, rate design consultation, and strategic facilitation.

Board
Briefs