

HIGHLIGHTS

NEWS FOR THE MEMBERS OF PELLA COOPERATIVE ELECTRIC

SEPTEMBER 2025

Join Us for Our Member Appreciation Day Drive-Thru BBQ!

Join us for Pella Cooperative Electric's Member Appreciation Day on Saturday, September 13th!

Drive thru the co-op's parking lot for a hamburger or hotdog on us, grilled by the Marion County Cattlemen. We'll hand you a member gift on your way through!

We've made a few important route changes this year to help things run smoothly and safely, so here's what you need to know:

- Enter from West 16th Street by Casey's, then follow Fifield Road to the back gate of our pole yard. Our team and directors will be ready to guide you from there! Check out the updated map for a visual of the new route on page 2!
- Once inside, you'll cruise through our shop where we'll be serving up grilled burgers and hot dogs, chips, drinks, a sweet treat, and a free giveaway, our way of saying thank you for being part of the co-op family.
- Signs and friendly staff will be on hand to keep things moving, but reviewing the map ahead of time will make everything even easier.

During the week leading up to Member Appreciation Day, PCEA will randomly pick door prize winners to win \$25 off your electric bill! No entry needed. We'll let you know if you win! Watch our Facebook page for prize winner announcements.

We're excited to celebrate YOU! Thank you for being part of what makes our co-op great!

Until supply lasts! Meals are provided for vehicle occupants only.

Pella Cooperative Electric

Your Touchstone Energy® Cooperative 

2615 Washington St.
PO Box 106
Pella, IA 50219

1-800-619-1040
www.pella-cea.org
service@pella-cea.org



Open weekdays: 7:30 am - 4:30 pm;
excluding holidays



Board of Directors

President
Duane Ver Ploeg

Asst. Secretary/Treasurer
Darrell Boot

Vice President
Steve Inskeep

Director
Jon Van Woerkom

Secretary
Bryce Arkema

Director
Roy Jahner

Treasurer
Carroll Hoksbergen

CEO
Doug Stewart

Pella Cooperative Electric is a not-for-profit, member-owned electric cooperative, governed by an elected Board of Directors. This institution is an equal opportunity provider and employer. See pella-cea.org > Non-discrimination Statement for more information.

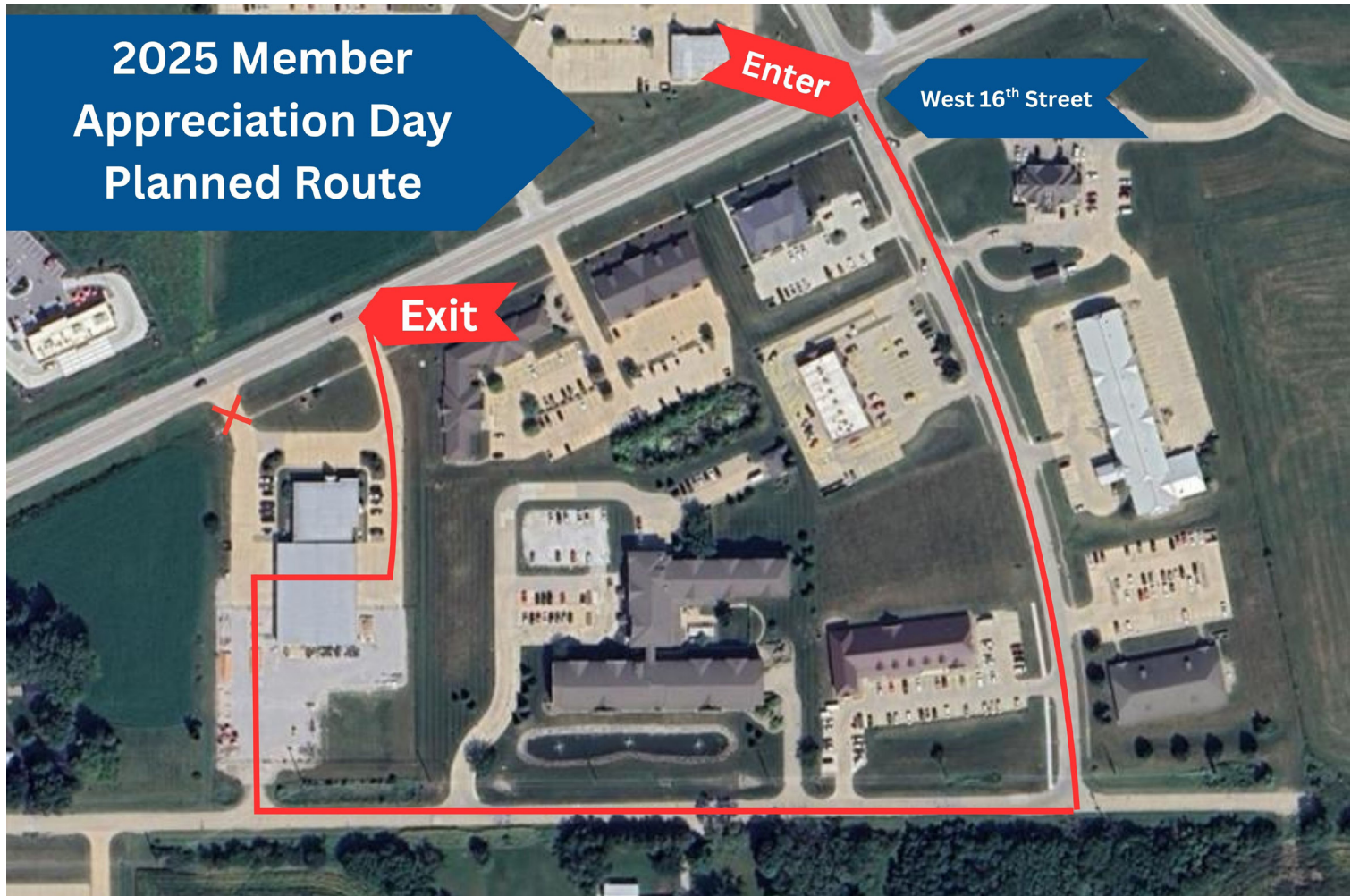
New Route Alert for Member Appreciation Day!

Our annual Drive-Thru Member Appreciation Day BBQ is right around the corner and we can't wait to see you!

Just one important update this year: **THE DRIVE THROUGH ROUTE HAS CHANGED!**

To help traffic flow smoothly and safely through our lot, we've made a few big adjustments to how you'll enter, drive through, and exit the event.

Please enter on West 16th Street by the Casey's and drive down Fifield Road to the back gate of our pole yard. There, staff and directors will be onsite to direct you into the shop! For more details, please refer to the map below.



As always, you'll drive through our shop where our team will be serving up fresh-grilled burgers and hot dogs, along with chips, drinks and a sweet treat as well as a free giveaway! We love this annual tradition, and we're so thankful for your continued membership!

We'll have signage and staff onsite to help direct traffic, but reviewing the new route ahead of time will help things run even more smoothly.

We look forward to celebrating you!

Smart Communication with SmartHub

Have you ever had questions about your electric bill? Do you ever wonder your true usage? If you've ever had questions about your account, our innovative web and mobile app, SmartHub, can help provide some answers.



SmartHub is available through Pella Cooperative Electric's website and as a free mobile app through the App Store (iOS devices) or Google Play Marketplace (Android devices).

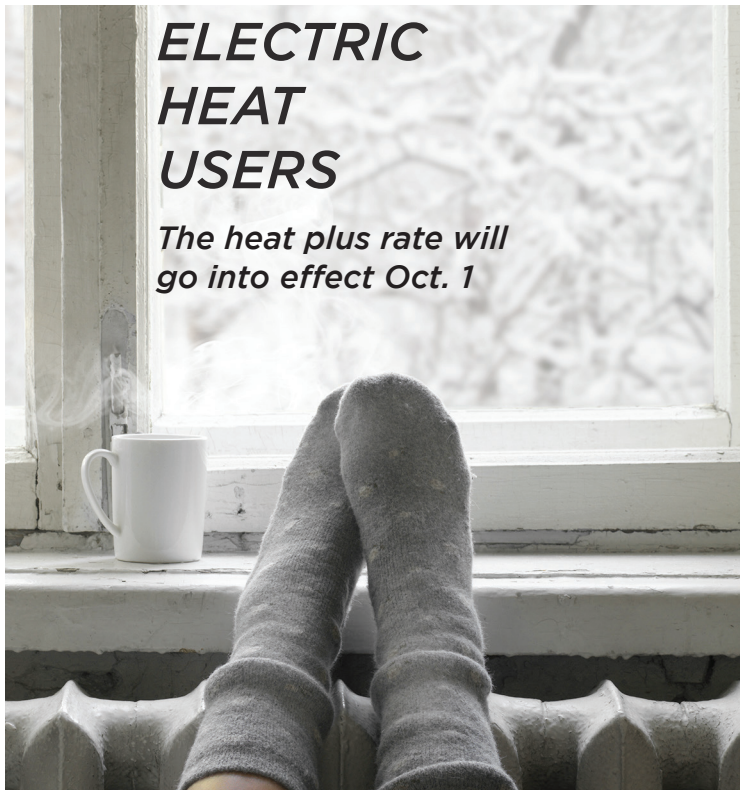
With SmartHub, you'll be able to view detailed usage information and gain insight that can help you better understand your bill. You can easily sign up for auto pay and manage your payment methods with SmartHub. You'll be able to put yourself in the driver's seat of your electric account.

You can also contact us with any issues regarding your service. Take control of your account and make interacting easy with SmartHub.

Learn more at
www.pella-cea.org/smarthub

ELECTRIC HEAT USERS

*The heat plus rate will
go into effect Oct. 1*





**WANTED:
Rural Iowa
high school
students
who have a
passion for
leadership**

Attend our webinar
series in October
for a chance to win
Apple AirPods and
a \$1,000 college
scholarship! Learn more
at IowaYouthTour.com



RECare: Just a Few Dollars Can Go a Long Way

Take the opportunity to make a difference in our community and give back to those in need with the RECare program. The RECare program helps low-income members make weatherization improvements to their home and/or pay their electric bill. Unemployment and unexpected expenses are some of the many reasons why families fall behind on their energy bills.

It's easy to sign up. Fill out this form and mail it back to us, or sign up online at pella-cea.org.

RECare SIGN UP FORM

"YES! I want to donate."

- ☐ Enclosed is a check with a one-time donation.
- ☐ I would like to make a monthly donation of \$ _____.
I understand that this amount will be automatically added to my monthly electric bill.
- ☐ Matching fund contribution. I will make a one-time contribution with a check enclosed. My contribution will be matched by: _____

Account #: _____

Name: _____

Address: _____

City, State, Zip: _____

Make Time for Safety This Harvest Season

Harvest season often means putting in long hours, which can make it difficult to stay alert and on the lookout for potential hazards.

Safety starts with preparation.

- Be prepared for potential emergencies before the rush of harvest season begins.
- Have a safety plan, and make sure that farm workers and family members are aware of the procedures in it.
- Be sure that you can see well in the areas where you are working. Consider adding extra lighting around grain bins and augers.

Take the time to look up and look out for electrical lines.

Always be aware of where they are in relation to your equipment. Keep a minimum of 10 feet away from all electrical equipment, and lower extensions before moving equipment. If you see a power line that is sagging or low, contact your utility. Also keep an eye out for guy wires. Although these wires are not energized, they can bring down live lines.



In equipment with auto-guidance systems, less focus is needed on steering, which may lead some drivers to think that they do not need to be as aware of navigation issues. However, even while using a GPS with auto-steering, farm workers need to keep safety in mind and stay focused on their surroundings.

Slow down, always stay alert, and take all recommended precautions. To help you do so, recognize when you need to take breaks so that you can be active and engaged in the farm work.

Additional electrical safety tips include:

- Use a spotter when operating large machinery near lines.
- Inspect the height of farm equipment to determine clearance.
- Look up and use care when moving any equipment such as extending augers or raising the bed of grain trucks around power lines.
- Always set extensions to the lowest setting when moving loads to prevent contact with overhead lines. Grain augers should always be positioned horizontally before being moved.
- Never attempt to move a power line out of the way or raise it for clearance.

If the machinery you are operating does make contact with a power line, stay on the equipment. Immediately call 911, warn others to stay away, and wait for the utility crew to cut the power.

Only on the rare occasion that the machinery catches fire should you leave the vehicle after contact is made.

If this is the case, jump off the equipment with your feet together and without touching the ground and machinery at the same time. Then, still keeping your feet together, hop to safety as you leave the area. Never touch anything that is in contact with a power line.

Remember, while harvest is a busy season on the farm, it's still important to take the time to keep safety first and look out for and stay safely away from potential hazards like overhead power lines.

The PCEA Board of Directors met on Thursday, August 28th for the August board meeting and discussed the following:

- CFO Cassie Cason provided a mid-year update on the Cooperative's 2025 budget performance. Despite rising costs and ongoing uncertainty in the industry, the Cooperative reported a strong first half of the year, highlighted by record-breaking energy sales in July, with 6.7 million kWh sold, the highest monthly total in our history.
- PCEA directors recently attended the IAEC District 4 meeting, where the focus was on building a new Policy and Advocacy framework. The initiative aims to strengthen engagement with local elected officials and ensure cooperatives are effectively advocating for safe, affordable, and reliable electric service.

**Board
Briefs**